



GERBER ACCUMARK PE

What's New April 2023 / v16.0

Date: April 2023

COPYRIGHT

Gerber AccuMark 2D © 2023 Lectra SA and its affiliates. All rights reserved.

This document may not be reproduced by any means, in whole or in part, without the written permission of the copyright owner.

This document is part of the proprietary articles furnished to document Lectra SA and its affiliates support for Gerber AccuMark.

In consideration for the furnishing of the information contained in this document, the party to whom it is given assumes its control and custody and agrees to the following:

The information contained herein is given in confidence and any part thereof shall not be copied or reproduced without the written consent of Lectra.

This document or the contents herein under no circumstances shall be used in the manufacture or reproduction of the articles shown, and the delivery of this document shall not constitute any right or license to do so.

TRADEMARKS

Gerber AccuMark, is a registered trademark of Lectra in the United States, all rights reserved. Other company names, brand names and product names mentioned in this document are trademarks or registered trademarks of their respective companies.

DISCLAIMER

The information contained in this document is subject to change without notice. Lectra SA and its affiliates shall not be liable for errors in this document or for incidental or consequential damages in connection with furnishing or use of this material, including, for example, loss of profits, fabric, and production time.

Contents

Highlights	4
1. v16.0 General Improvements	5
1.1 Alterations with Multi-Dimensional Grading	5
1.2 User Interface Updates	8
1.3 Conversions	12
1.4 Plotting Improvements for Annotation On Line	12
1.5 Updates to PERU	14
1.6 Gerber AccuMark Localization	14
1.7 Help/Documentation	15
2. Pattern Design	16
2.1 View Alterations with Multidimensional Grade	16
2.2 Create Altered Size with Multidimensional Grade	16
2.3 Plot Altered Size with Multidimensional Grade	17
2.4 New Function to Clip Image	18
2.5 Maintain Fullness Objects When Modifying	19
3. Easy Marking	20
3.1 Relative Icon Size Preference	20
3.2 PDF Supports Internal Line Label H for Digital Print Files	21
3.3 Additional Options for Quick and Flex Nesting for AccuMark markers	22

GERBER ACCUMARK®

WHAT'S NEW FOR APRIL 2023

HIGHLIGHTS

For AccuMark v16.0 users will find the following improvements and new features added to streamline the production workflow and to provide even more integration points.

- Alteration support with Multi-Dimensional Grading
- New Interface Design Continues
 - Updated Annotation
 - Updated Size Code
- Plotting Improvements for Annotation on Line
- Clip Images
- Section and Shade Zone support for the optional Cloud Nesting offer

1. V16.0 GENERAL IMPROVEMENTS

1.1 Alterations with Multi-Dimensional Grading

Increase customer size offerings by combining the functionality of alterations with multi-dimensional grade. Combining the rule-based movements with the grading approach simplifies complex adjustments to generate an accurate product fit.

Alterations and multi-dimensional grading are features in AccuMark that allow for fit customization. Alterations utilize point ids and rules to define a custom movement. Multi-dimensional grade assigns multiple size lines (rule tables) to a piece allowing movement by grade rules in each dimension. Before this release, only one customization method was allowed. If multi-dimensional graded was stored in a piece, all alteration functionality would automatically be blocked.

This is a fully integrated solution throughout the Gerber AccuMark software suite. General Guidelines include:

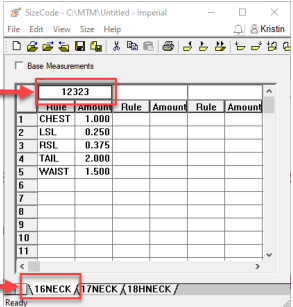
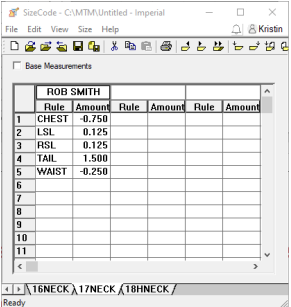
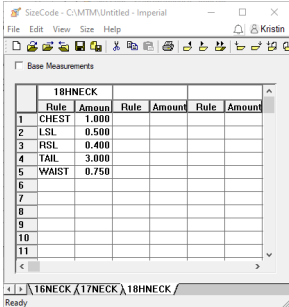
- You can't use a size separator character in any dimension of the piece size name.
- For selection, always reference D1.

NOTE: For more information on multi-dimensional grade, refer to the v12 What's New documentation in C:\ProgramData\Gerber Technology\Training Docs\AccuMark Documentation\What's New Previous

1.1.1 Size Code and Multidimensional Grade

There is no change to the size code editor to support the grading enhancement allowing an easy transition for continued use of existing editors. Note that all ordered sizes continue to list only Dimension 1 (D1) size names. In the Order Editor and Pattern Design size selection fields, all multidimensional sizes will be available for the defined actual sizes.

Examples of Order Size Names

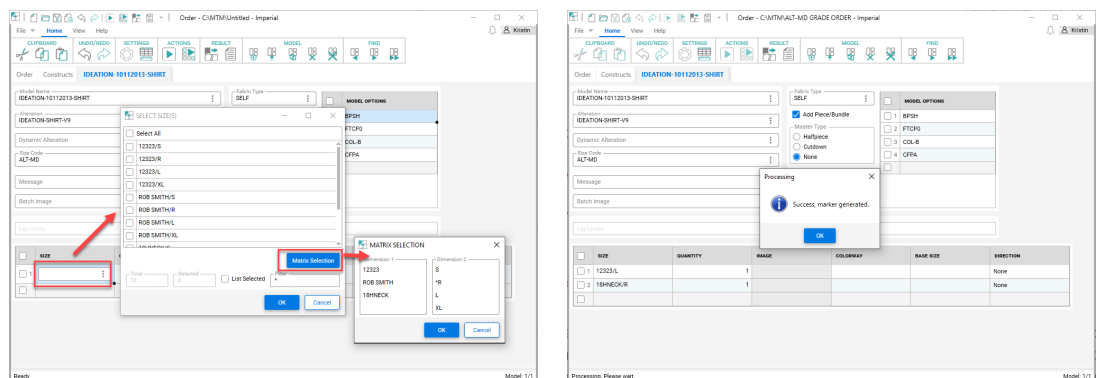
Order Number	Customer Name	Size Name
		

1.1.2 Orders with Alterations and Multidimensional Grade

The basic ordering process remains unchanged. However, select a model with multidimensional grade, and the alteration and size code fields remain active. The previous behavior blocked these selections.

To order a marker with Alterations and Multidimensional Grade:

1. From AccuMark Explorer, go to File→New→Order.
2. Enter all the required parameters in the Order tab, such as the Lay Limit, Annotation, and Fabric Width.
3. In the Model tab, select a model with multidimensional grade.
4. Next, select the alteration and size code editors.
5. For the size selection, use the lookup to select sizes. The ordered size names defined in the size code display with all available dimensions. Use the matrix selection to refine the selection.
6. Enter all remaining quantities, fabrics, and optional items like model options.
7. From the toolbar, Process the order.

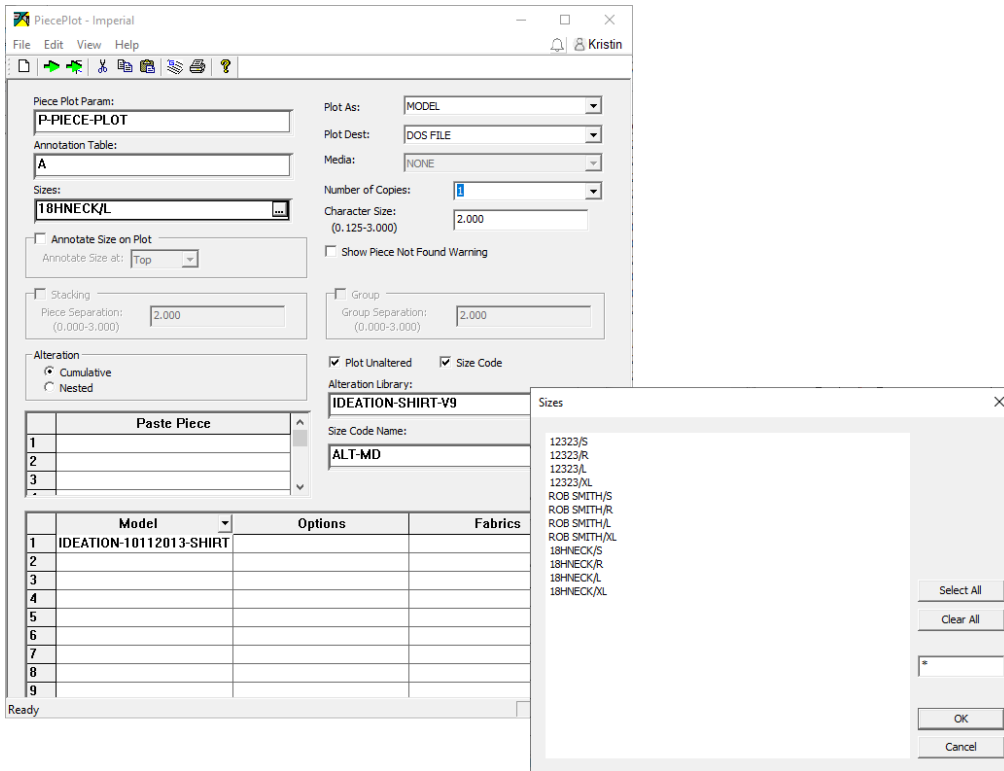


Ordered Size Names are available with Multiple Dimensions

Orders processed successfully with Alterations and Multidimensional Grade

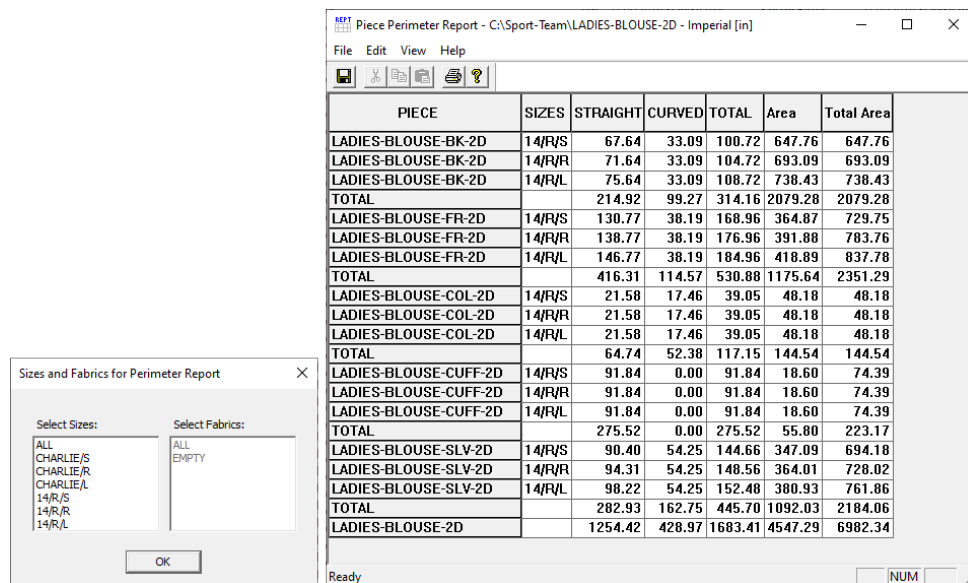
1.1.3 Plotting Alterations and Multidimensional Grade

Plotting pieces or models in AccuMark Explorer adds the option to plot Alterations with Multidimensional Grade. This functionality allows you to plot a sample and validate the fit. Once the alteration and size code are defined, the size selection will update with the multidimensional size name.



1.1.4 Reports with Alterations and Multidimensional Grade

Reporting options such as Alter Piece Perimeter now allow models with multidimensional grade to be selected and reviewed with an alteration library and size code. This helps to understand the altered piece area for costing calculations.



1.2 User Interface Updates

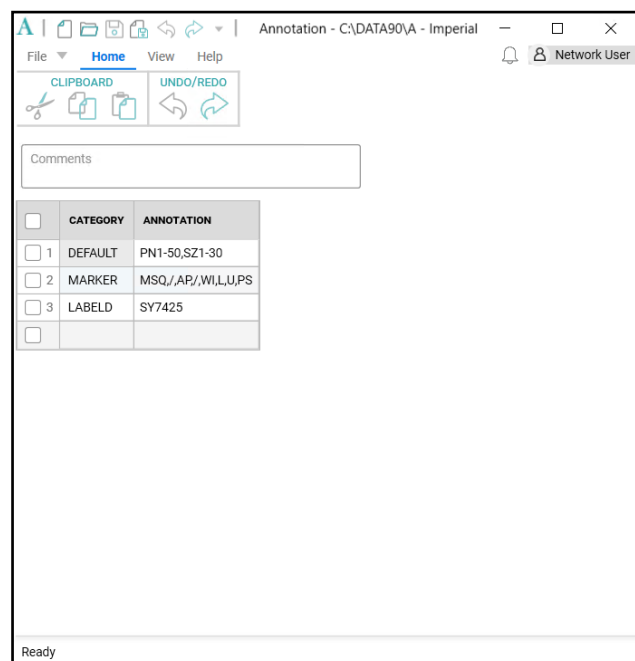
With the release of the April 2023 AccuMark, users will find even more improvements for editors used for the most common workflows. The new look of these forms is part of an ongoing project to refresh the look of the software, while improving user productivity. Additions of a ribbon menu, common functionality and simplified colors make navigation easy.

The ribbon menu allows users to rapidly perform common data management tasks including opening new forms, making edits to the form, locating and navigating to an item or accessing the online help resources. Users can also take advantage of the common features in newly redesigned forms including creating a custom Quick Access Toolbar for even more flexibility.

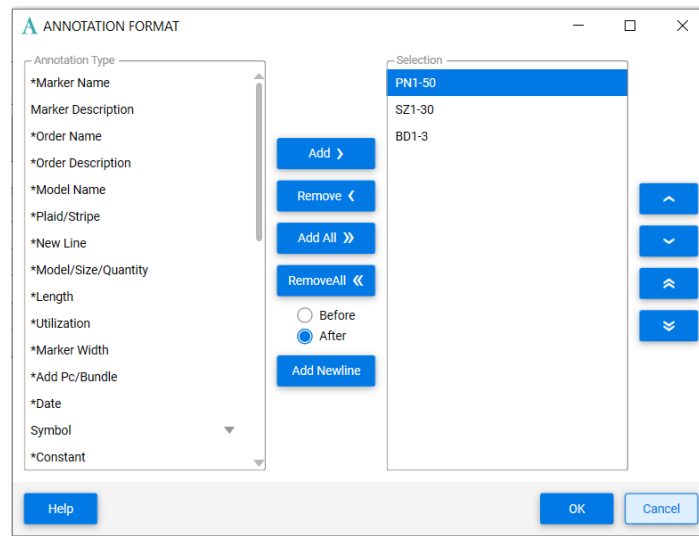
1.2.1 Updated Annotation Editor

The updated AccuMark Annotation Editor now displays the category and annotation in an updated format, and the look up provides access to an interactive grid that allows selections to be made and added to define the annotation that will plot on pieces and/or markers. The new ribbon groups functionality into a File menu as well as Home, View and Help tabs.

Users may still type directly in the category and annotation fields on the main page. New lines are automatically added to the grid as more entries are made.



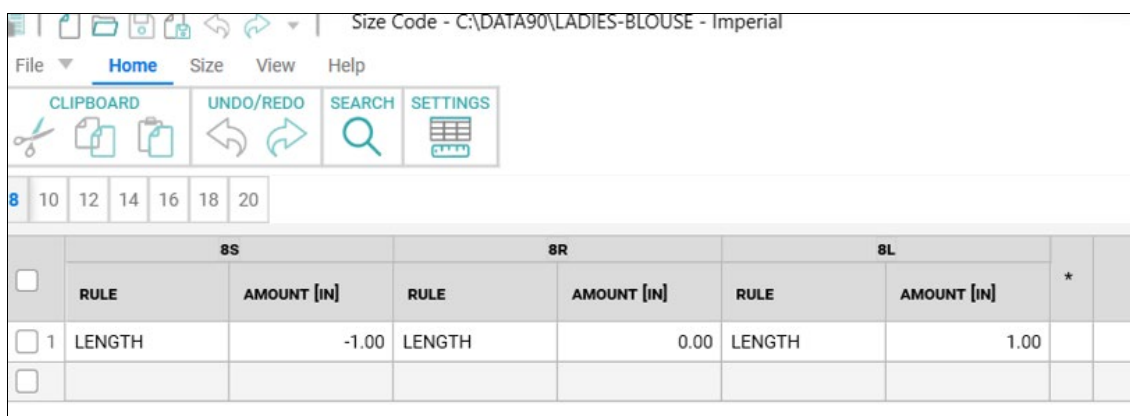
A dialog box for Annotation Format opens when the lookup control is selected in within an Annotation Cell. Annotation Type can be selected from the left list box, then added to the Selection group on the right. Controls in the center of the dialog box allows choices to be moved from one list box to the other. Control and Shift keys can be used to select multiple items to move.



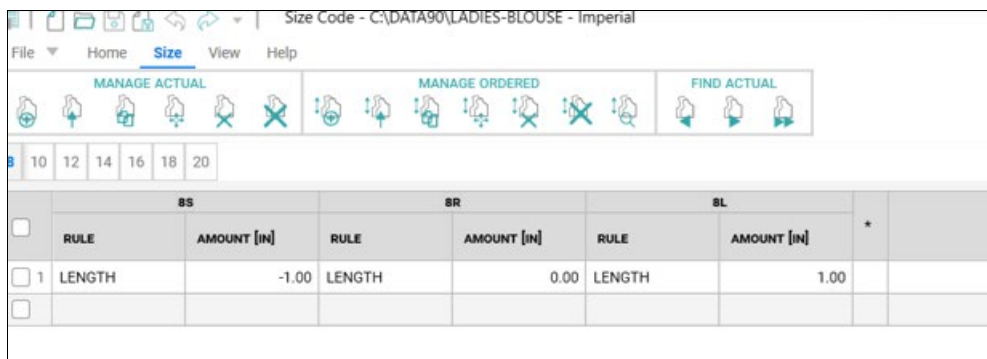
1.1.1 Updated Size Code Editor

The new look for the Size Code includes a File Menu, as well as Home, Size, View and Help tabs. Alteration Rule names and the alteration amounts display in a grid with headers displaying the Ordered Size. Tabs above the grid list each actual size. The active actual size being edited is highlighted in blue.

Simplified icons will add, copy, delete and arrange the actual or ordered sizes in the display. Use the Home Tab tools to perform Windows clipboard features such as cut/copy/paste as well as to undo or redo actions while editing. The Search icon will perform a general windows search of the data in the grid while the Settings allow you to open the User Environment Parameter table for edit.



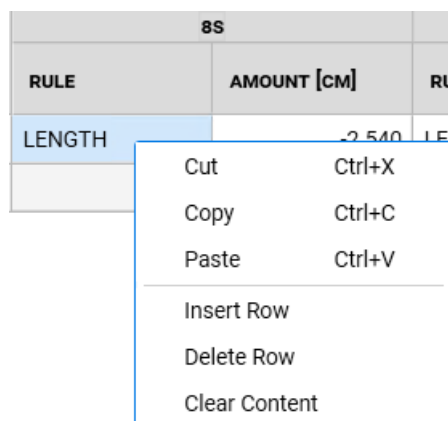
Use the Size Tab to add, delete and rearrange the Actual Ordered Sizes. Powerful Find tools allow search criteria to be defined to locate sizes with specific alteration names and / or alteration amounts.



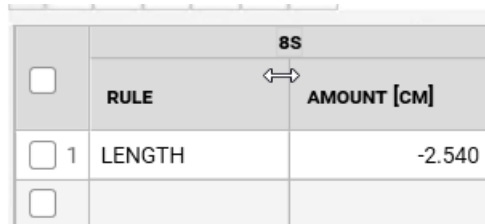
The view tab allows the status bar to be shown/hidden, which will display the total number of actual sizes in the open Size Code table. To use a dark theme, choose “Monarch Dark” from the View tab.

The Help tab provides access to useful reference material including the Help File, current version documents for What’s New and Release Notes.

Use Context menus, accessed by a right mouse click, within the cells of the grid to perform common editing tasks such as Cut, Copy, Paste as well as to delete or insert rows.



The width of the columns can be adjusted by simply dragging the divider. A right mouse click will offer the option to Reset the column width to the original default. The Alteration rule amount column indicates if the units of measure for the alteration is set for inches, centimeters or millimeters which is determined by the User Environment Parameter Table.



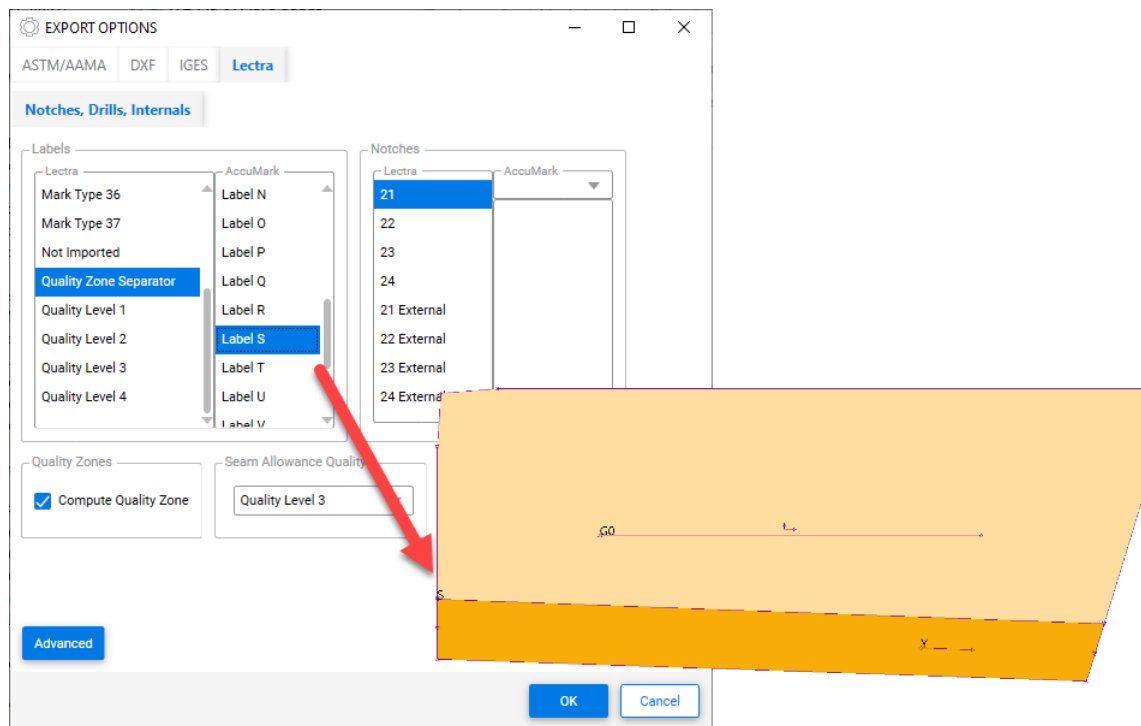
The image shows a table with a column width divider. The table has three columns: a checkbox column, a 'RULE' column, and an 'AMOUNT [CM]' column. The 'AMOUNT [CM]' column contains the value '-2.540'. A right-click context menu is open over the divider, showing the text '8S' and a double-headed arrow icon.

	RULE	AMOUNT [CM]
<input type="checkbox"/> 1	LENGTH	-2.540
<input type="checkbox"/>		

In addition to the updated look for the Annotation and Size Code Editors, performance improvements have been made for AccuMark MTM. Review the MTM What's New document for details on the changes changes made to improve speed and responsiveness.

1.3 Conversions

An expanded selection of AccuMark labels, including label S, is added to convert Quality Zone Separators when exporting to Modaris format. This offers support for producing products often cut on leather where quality or shade zones indicate optimal placement for cutting. By adding additional labels, AccuMark users can quickly convert files to integrate with Lectra cutters and 4.0 solutions without altering existing data.

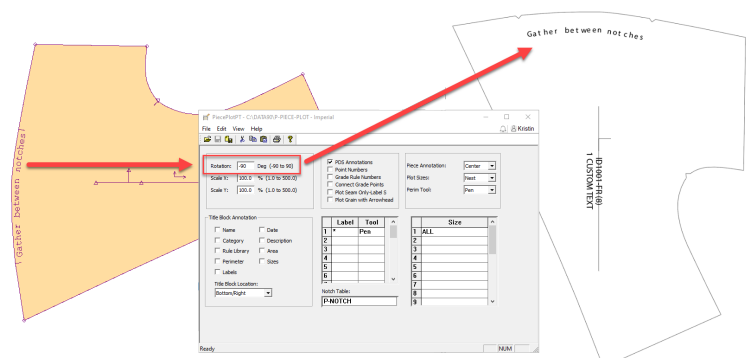


1.4 Plotting Improvements for Annotation On Line

Annotation on Line was introduced in AccuMark 15.1, where text follows the path an internal or perimeter line to indicate production information in specific locations. The feature is updated in 16.0 to support additional plot options for both piece and marker plotting. The list below highlights the supported plot scenarios.

Piece Plot

- Scale
- Rotate
- Mirrored
- Save as image
- Plot altered



Marker Plot

- Marker scale
- Folded pieces
- Mirrored pieces
- Flip pieces
- Annotation on seam

Conversion

- Standard DXF

NOTE: For more information on annotation on line, refer to the v15 What's New documentation in C:\ProgramData\Gerber Technology\Training Docs\AccuMark Documentation\What's New Previous

1.5 Updates to PERU

Known issues and know requests submitted through the Gerber Problem and Enhancement Report Utility now notify Lectra Customer Success to open a support ticket.

1.6 Gerber AccuMark Localization

We are excited to announce our updated translation process for the AccuMark software suite. Our goal is to obtain consistency for the lexicon for the entire portfolio at Lectra and maintain a high level of translation quality to meet our premium positioning with dedicated terms of our 3 market strategic sectors: fashion, furniture, and automotive.

Starting from v16.0, each release of the AccuMark software suite with its translations will be available at the same time as the English version.

1.6.1 Supported Languages

The Gerber AccuMark Suite officially translates into ten languages.

- French
- Italian
- Spanish
- German
- Portuguese
- Simplified Chinese
- Traditional Chinese
- Turkish
- Polish
- Japanese

In addition to the above ten languages, we also provide a Hong Kong Language Pack with Traditional Chinese content.

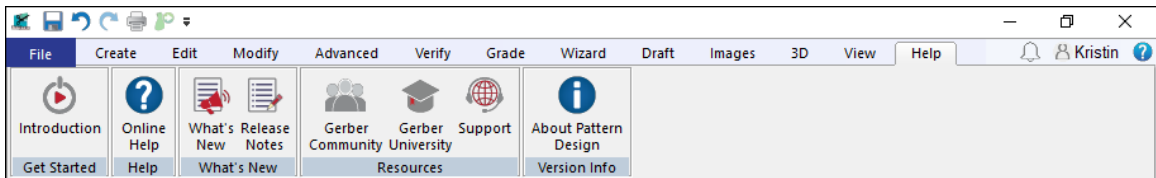
1.6.2 Documentation

What's New documentation will translate in the above languages following the same methodology as the software. New for v16.0, the translated documentation will be embedded into the language pack. From the Help Tab of the software program (example: AccuMark Explorer > Help Tab > What's New Icon) the translated documentation is available for the language pack installed. We are providing you translated contents in real time with the new Features.

If a translation is not provided for a What's New, the content remains in English. Images inside the What's New documentation remains in English. The Release Note documentation remains in English.

1.7 Help/Documentation

The Help tab icons now match to the help icons displayed in the Introductory Help to easily identify the support functionality in all AccuMark applications.



Microsoft has ended support for the XPS file format and retired the XPS Viewer program. As Microsoft no longer issues security updates for this viewer application, the AccuMark documentation is no longer installed in this format. Documents detailing the new features and system requirements will be provided as PDF files.

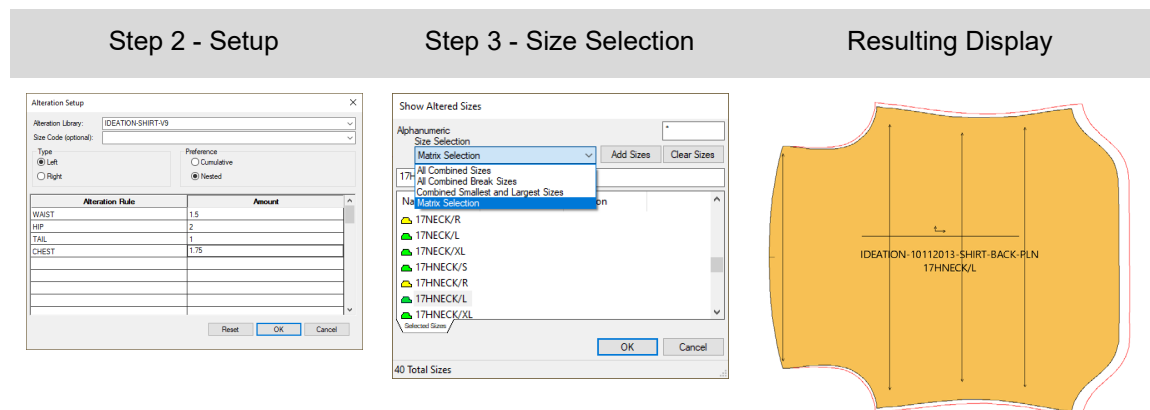
2. PATTERN DESIGN

2.1 View Alterations with Multidimensional Grade

All functionality with alterations supports models/pieces utilizing multidimensional grade. Use the feature View Alterations to visualize the piece geometry for custom-fit patterns.

To View Alterations with Multidimensional Graded Pieces:

1. Open the model in Pattern Design, place desired piece(s) in the work area, and go to Grade → Altered Sizes. Select piece(s) to view and ensure D1 is the active dimension.
2. Select the alteration library and alteration rules to display. The size code option is available if the rules and values are predefined. Press OK to continue.
3. The following Show Altered Sizes dialog provides the size(s) to view. By default, all multidimensional size combinations display. To manage large-size sets, use the Matrix Selection option with the ctrl or shift key for multi-selection. When finished, select OK.
4. The altered piece will display in the work area as cumulative or nested lines showing the altered movement based on the geometry of the selected multidimensional graded size.



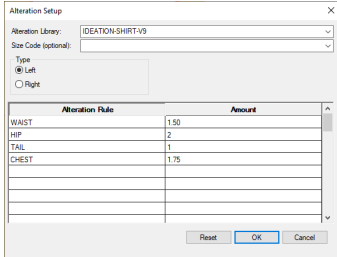
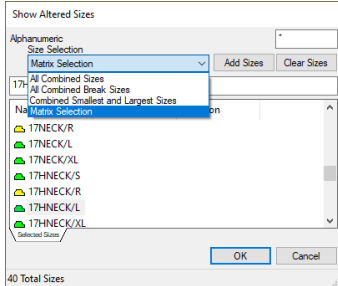
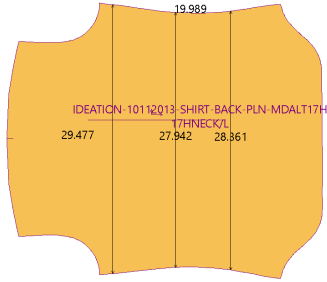
2.2 Create Altered Size with Multidimensional Grade

All functionality with alterations supports models/pieces utilizing multidimensional grade. Use the feature Create Altered Size to verify the piece measurements for custom-fit patterns or generate a new pattern piece. The same selection process applies to all alterations features in Pattern Design.

To Create Altered Sizes with Multidimensional Graded Pieces:

1. Place piece(s) in Pattern Design work area and go to Create → Altered Sizes. Select piece(s) to create and ensure D1 is the active dimension.
2. Select the alteration library and alteration rules to generate. The size code option is available if the rules and values are predefined. Press OK to continue.
3. The following Show Altered Sizes dialog provides the size(s) to create. By default, all multidimensional size combinations display. To manage large-size sets, use the Matrix Selection option with the ctrl or shift key for multi-selection. When finished, select OK.

- The altered piece will generate as a separate piece(s) with the altered movement based on the geometry of the selected multidimensional graded size.

Step 2 - Setup	Step 3 - Size Selection	Resulting Display
		

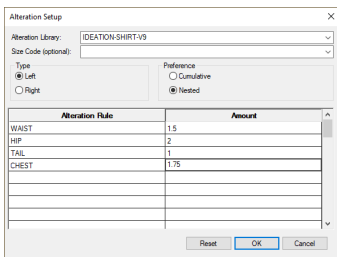
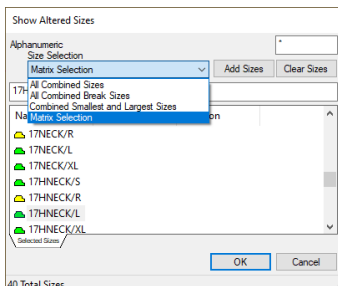
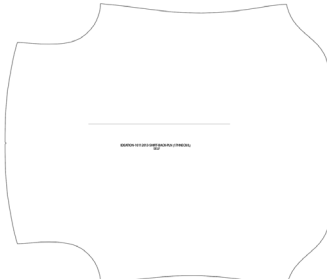
NOTE: The new altered piece does not contain the graded nest. Use the option New Piece Name to avoid overwriting the original pattern.

2.3 Plot Altered Size with Multidimensional Grade

All functionality with alterations supports models/pieces utilizing multidimensional grade. Use the feature Plot Altered to verify the piece measurements for custom-fit patterns or for sample production. The same selection process applies to all alterations features in Pattern Design.

To Plot Altered Sizes with Multidimensional Graded Pieces:

- Place piece(s) in Pattern Design work area and go to File → Plot Altered. Select piece(s) to plot and ensure D1 is the active dimension.
- Select the alteration library and alteration rules to plot. The size code option is available if the rules and values are predefined. Press OK to continue.
- The following Show Altered Sizes dialog provides the size(s) to plot. By default, all multidimensional size combinations display. To manage large-size sets, use the Matrix Selection option with the ctrl or shift key for multi-selection. When finished, select OK.
- The altered piece will plot to the destination defined in the Preferences with the altered movement based on the geometry of the selected multidimensional graded size.

Step 2 - Setup	Step 3 - Size Selection	Resulting Display
		

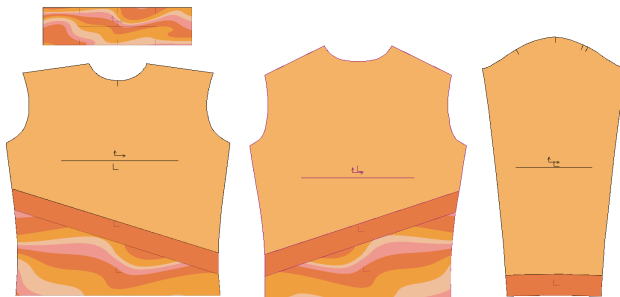
2.4 New Function to Clip Image

Clip image easily maintains complex graphic placement for all sizes by utilizing the powerful grade features for internal lines. No longer spend hours in graphic programs to align images for individual sizes. Instead, only simple blocks are needed, and the image will clip to the selected graded internals.

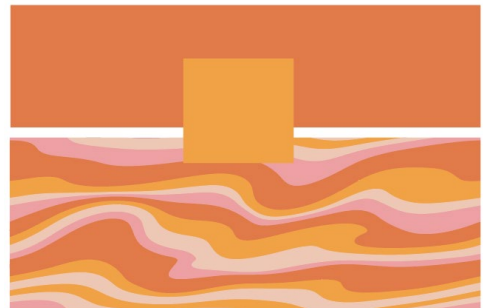
To Clip Images:

1. Add internal design lines to the piece using any create line function. Select Add Grade Rules on Intersection option to add grade to the internal line.
2. Place trim image(s) on a piece.
3. From the Images tab, select Clip in the Modify panel.
4. Select the image to clip.
5. Then use the Ctrl key in Click n Go mode to select all internal lines to clip the image.
6. Select the image on the side/region to keep.
7. Repeat as needed.

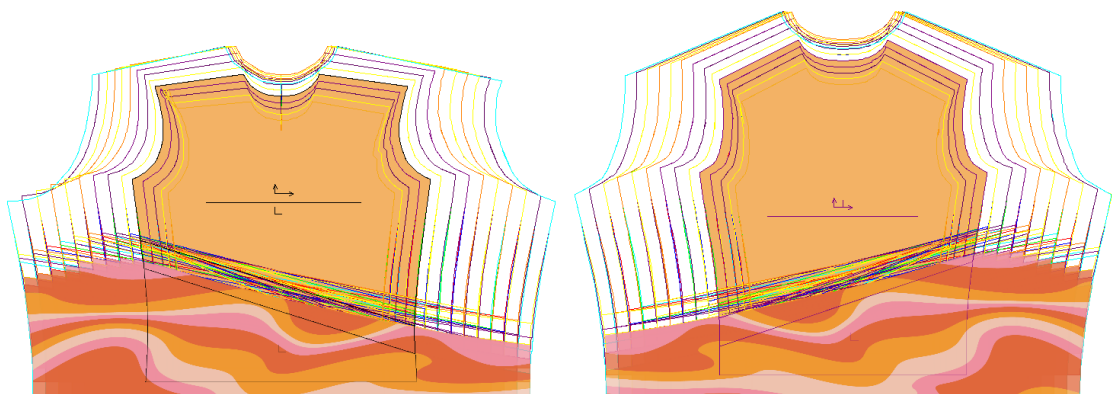
Clip Image to Internal Lines



Simple Artwork Preparation



Automatically Clips to Graded Internal Lines

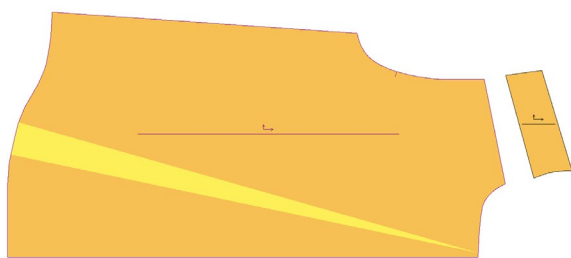


Use the same Clip function to unclip an image. To Unclip Images:

1. From the Images tab, select Clip in the Modify panel.
2. Select the image to unclip.
3. Then use the Ctrl key in Click n Go mode to select all internal lines to unclip.
4. Repeat as needed.

2.5 Maintain Fullness Objects When Modifying

Fullness now supports maintaining the object when performing Modify functions such as Combine Piece. This expanded feature support is helpful to edit, close, or delete the fullness as modifications occur.



Before Combine Piece

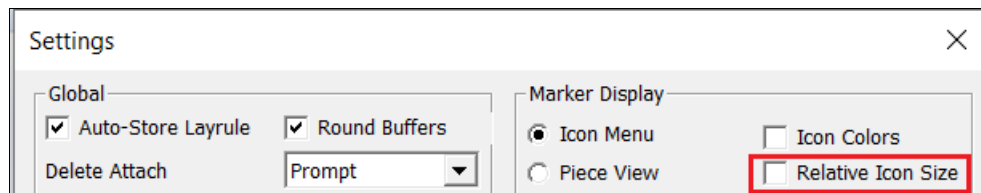


After Combine Piece—Fullness Object Maintained

3. EASY MARKING

3.1 Relative Icon Size Preference

Manual marker makers can now view the relative size of pieces in relation to each other before dragging them into the marking area. The Settings Dialog box now includes a checkbox for “Relative Icon Size” which will apply to the icon menu and piece view displays. The default setting for this new option is Off.



In the image below, the Relative Icon Size is off. Piece icon sizes display in the same scale no matter what the size of the actual piece geometry. For example, the back pieces appear as large as the collars and cuffs.

1/1		LADIES-BLOUSE X									
1- 10	A	1	--	1	1	1	1	1	1	1	1
1- 12	B	2	--	2	2	2	2	2	2	2	2
1- 14	D	2	--	2	2	2	2	2	2	2	2
1- 16	F	1	--	1	1	1	1	1	1	1	1

When the setting is checked, the piece images in the menu are scaled to display relative size. The collars and cuffs are shown smaller than the back, fronts, and sleeves.

1/1		LADIES-BLOUSE X									
1- 10	A	1	--	1	1	1	1	1	1	1	1
1- 12	B	2	--	2	2	2	2	2	2	2	2
1- 14	D	2	--	2	2	2	2	2	2	2	2
1- 16	F	1	--	1	1	1	1	1	1	1	1

3.2 PDF Supports Internal Line Label H for Digital Print Files

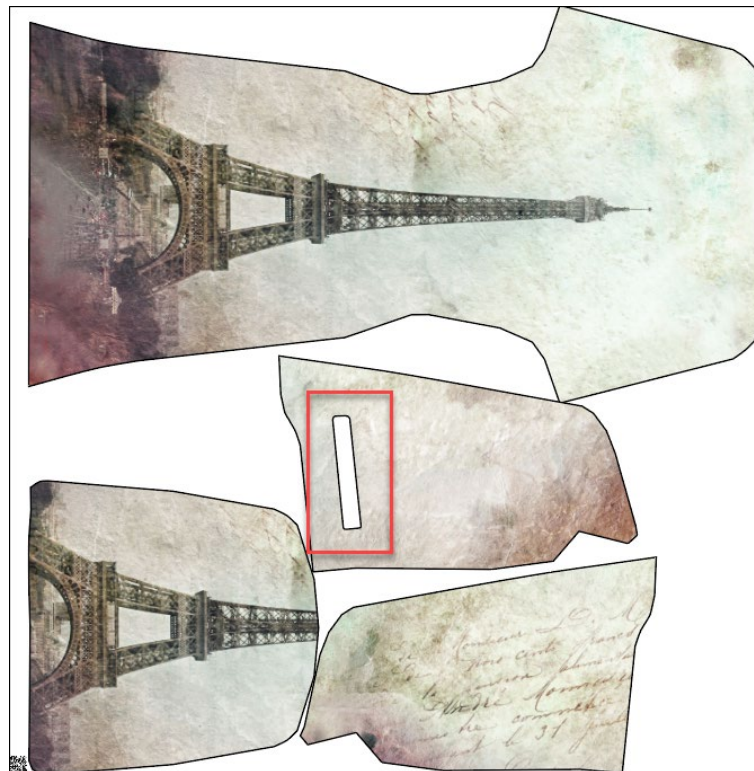
New support for internal cut lines with digital print files reduces ink consumption by only printing desired areas.

To utilize this improvement, you can add a closed internal H line label to the piece(s) in Pattern Design. Once the production marker is ordered and processed, the internal cutout will accurately display in Easy Marking. Use the feature Save as 1:1 in Easy Marking to create the digital print file.

Internal H Closed Cutout



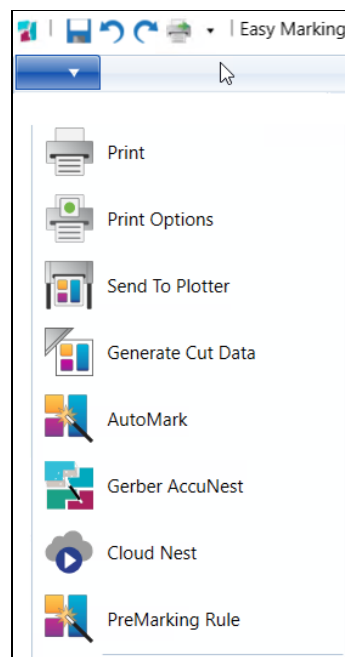
Cutout Supported in PDF Digital Print File



3.3 Additional Options for Quick and Flex Nesting for AccuMark markers

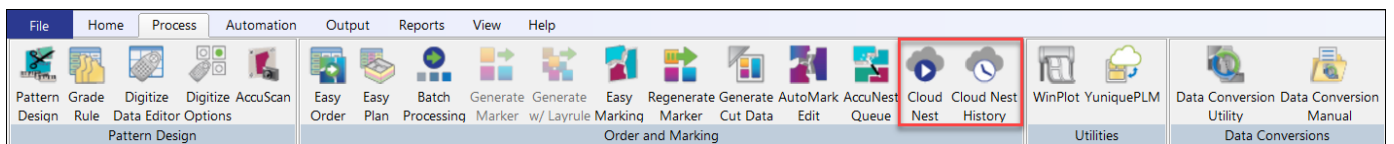
3.3.1 Send to Cloud Nesting from Easy Marking

Send markers now to Cloud Nesting directly from Easy Marking using a new selection to the File Menu. This new capability allows users to partially place markers to control placement of particular pieces, then finish the marker with the power of Cloud Nesting.



3.3.2 Sectional and Shade Zone Support

Continuing the work begun in AccuMark version 15.1.0, users can now define sections and shade zones for markers being sent for Cloud Nesting. These offers require a subscription for nesting, which can be purchased by contacting your sales representative.



Quick and Flex offer an automated cloud-based nesting capability for costing, procurement and production.

- Quick gives brands and retailers the ability to fast-track product development for new items with agility and ease.
- Flex is designed for manufacturers with a high volume of markers to provide a balance for different production cycles and ensures users can efficiently manage activity peaks.

Set the preferences for nesting for sections and shade zones in the dialog box that appears when sending markers to cloud nesting.

Placement Groups

Sections

By Bundle By Category By Size By Bundle Group

From AccuPlan

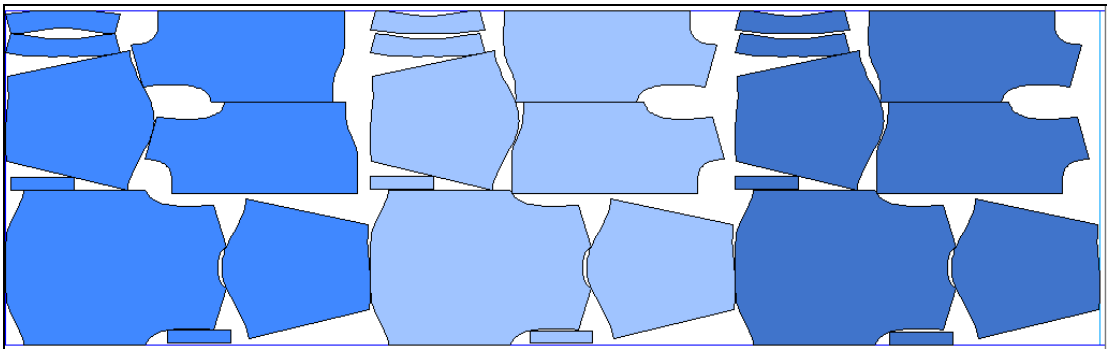
Block Fuse Position

At Start At End

Shade Zones

By Bundle By Category By Size By Bundle Group

Sections allow for pieces to be grouped together for cutting and picking purposes and are often used during step spreading.



Shade zone are horizontal zones intended to allow pieces to be grouped together for fabrics with shade variations, lighter or darker in certain places.

